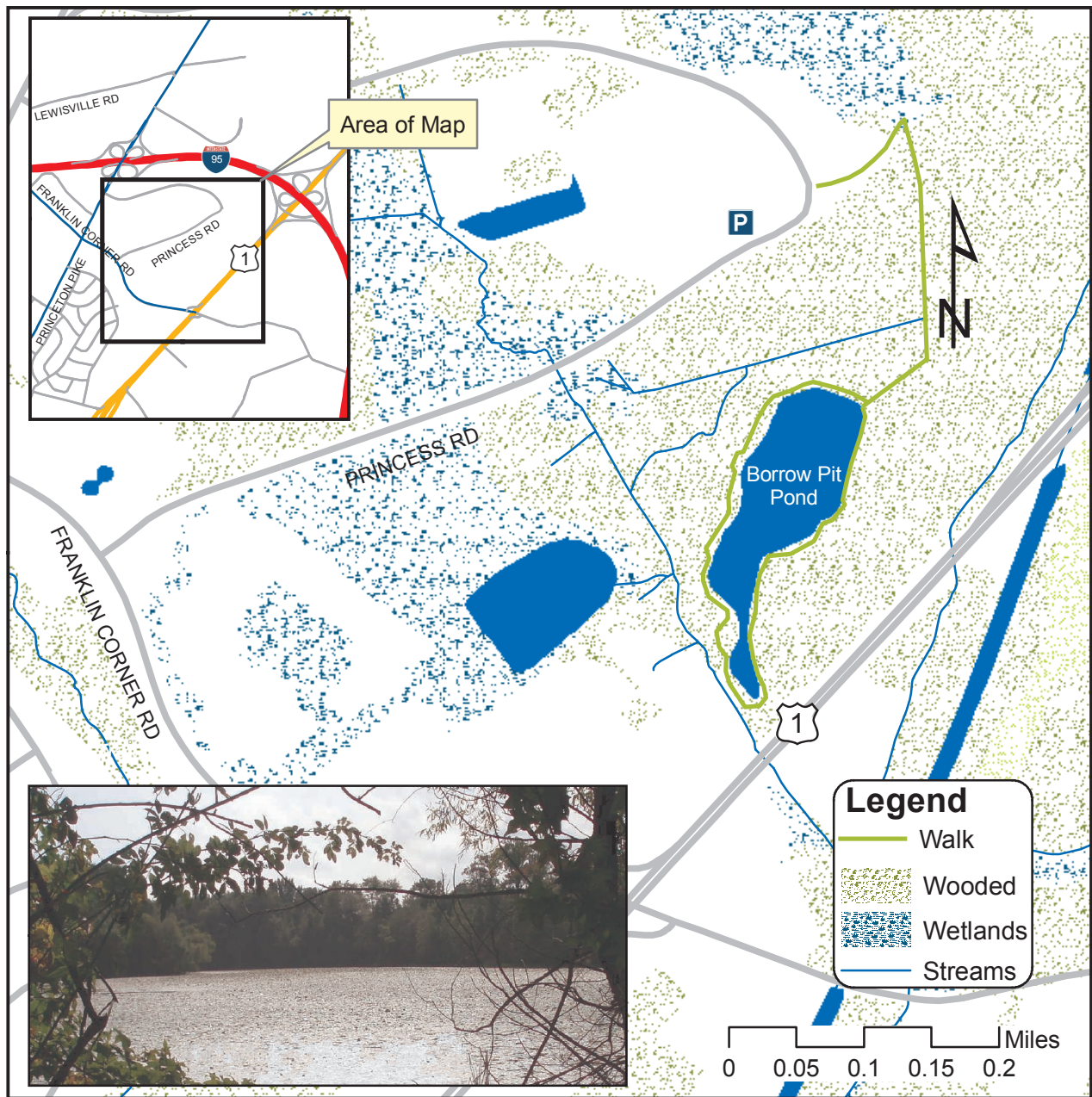


Lawrence Township Greenway Committee 19th Annual Walk

Delaware and Raritan Canal State Park at Princess Road

October 18, 2009 at 1:00 PM



Join us for a 1.3 mile walk through parkland newly acquired for the Delaware and Raritan Canal State Park. The 60 acre parcel, historically farmed, is wooded with wetlands and features the 6.5 acre Borrow Pit Pond. As the name suggests, the pond is a borrow pit that was excavated 20 to 30 years ago. Please be aware that we plan to circumnavigate the pond, which is moderately difficult. For an easier walk, you may turn around upon reaching the pond. Bug spray is advised in case mosquitoes are still active. Parking is at the office building nearest the sharp bend in Princess Rd. See lawrencegreenway.org for updates.