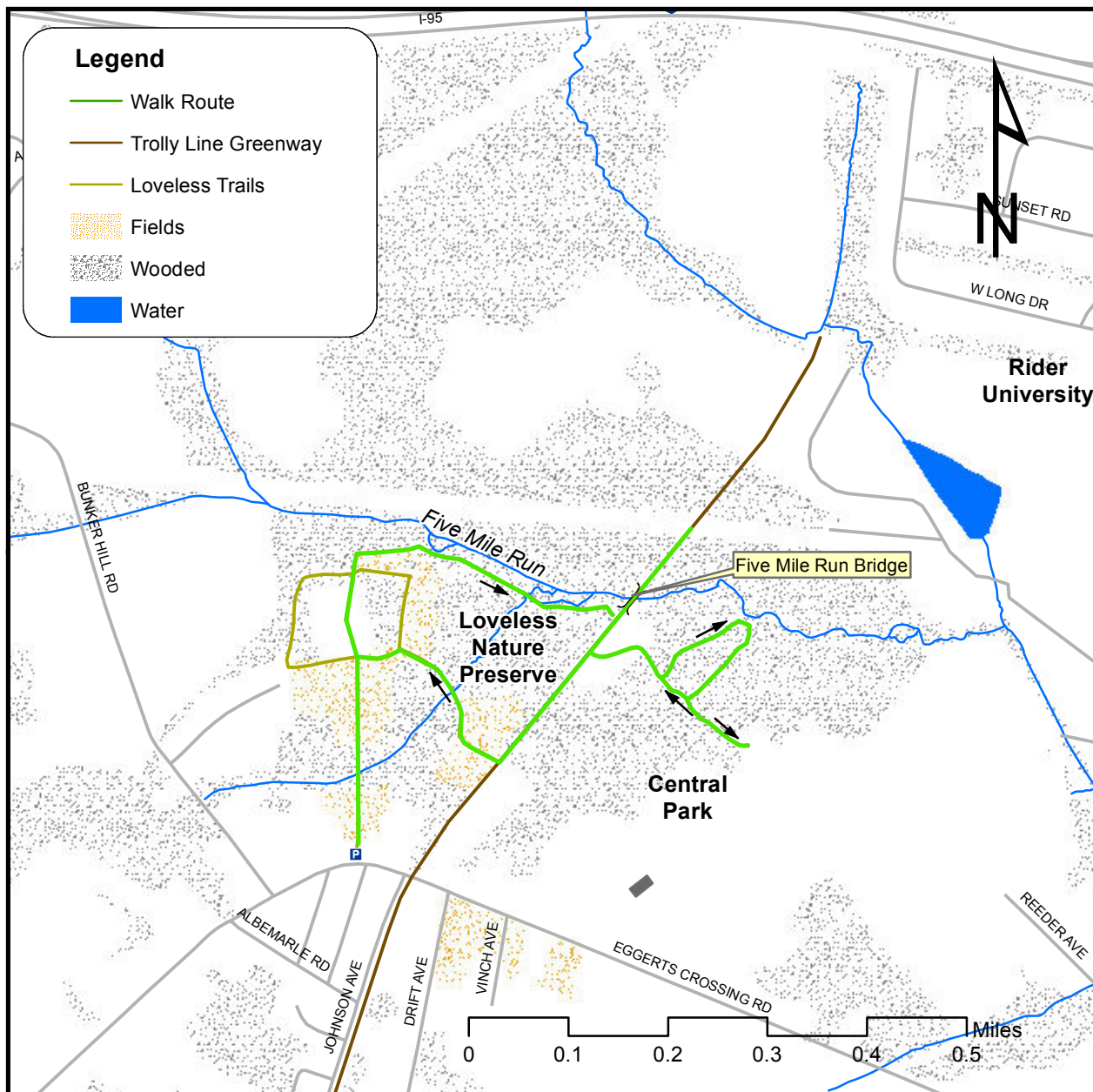


Lawrence Township Greenway Committee 21st Annual Hike

Loveless Nature Preserve & Central Park

Celebrating the Opening of the Trolley Greenway's Five Mile Run Bridge

June 11, 2011 at 9:00 AM



Meet at the entrance of the 44 acre Loveless Nature Preserve on Eggerts Crossing Road at 9 am. Hike through this beautiful former Christmas tree farm on to the recently re-surfaced Johnson Trolley Line. Follow the trolley line to the bridge over Five Mile Run. At 10 am we will celebrate the opening of the bridge. Afterwards, hikers will explore some little known trails in Lawrence's Central Park before returning to the parking area. The total hike is about two and a quarter miles.