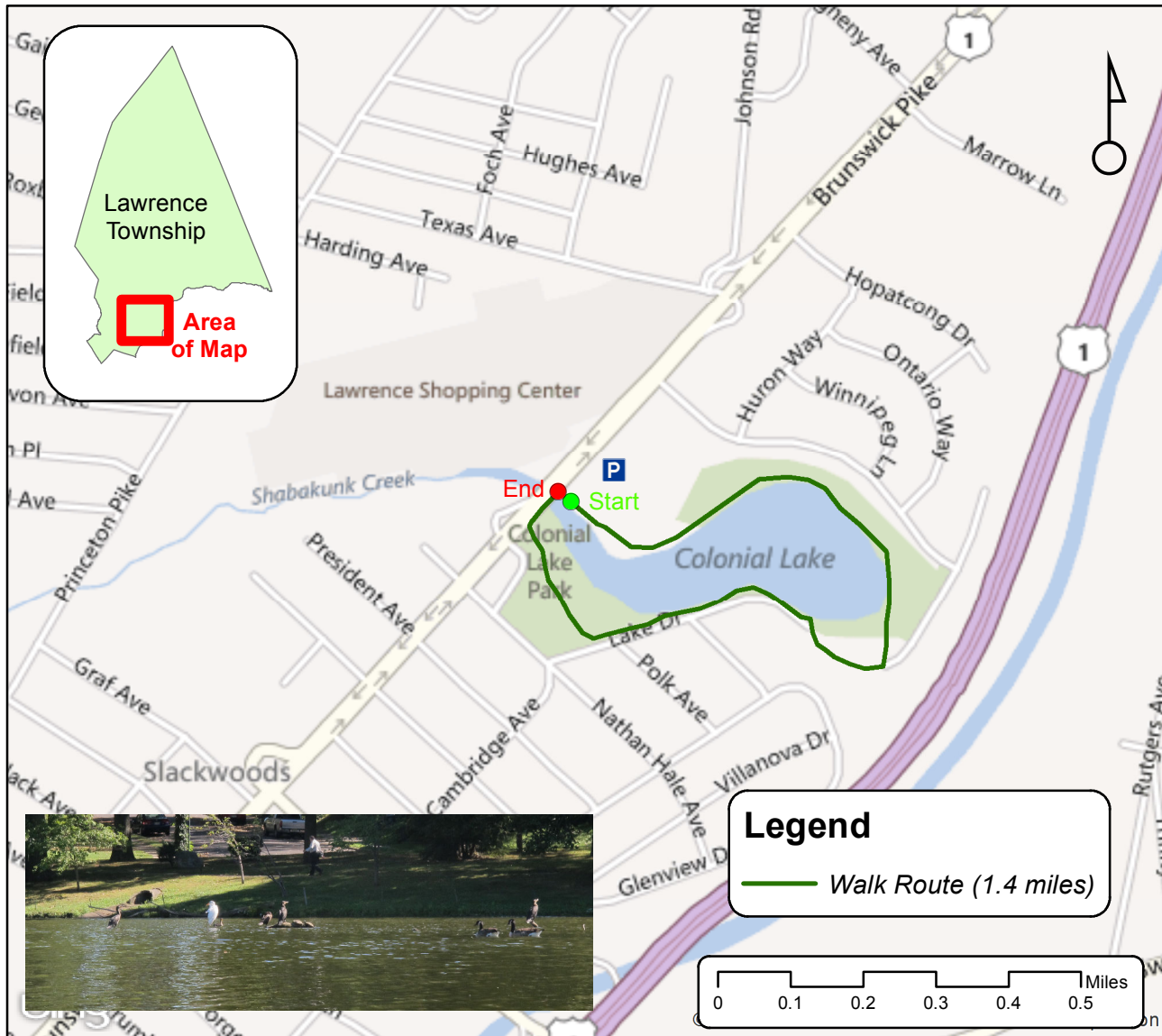


Lawrence Township Greenway Committee 22nd Annual Hike

Colonial Lake Park, October 21, 2012 at 1 PM



Join us as we circumnavigate Colonial Lake in Lawrence Township and explore the fauna, flora, geology and history of the park and lake.

Walk is on level ground on hard or paved surfaces. No hills. No mud.

Park at Colonial Bowling and Entertainment on US Route 1 Business North.

